

TECHNICAL DATA SHEET

RADIAL FAN nr. AFGG-35_20



G&G filtration CZ, s.r.o.

A Hrubínova 1903/9, 66451 Šlapanice, CZ
 IČ 05226953 IČ DPH CZ05226953
 E info@ggf.cz W www.ggf.cz

ITEM1

Document printed by Aeraulica - Dimensions and performances can be changed without prior notice

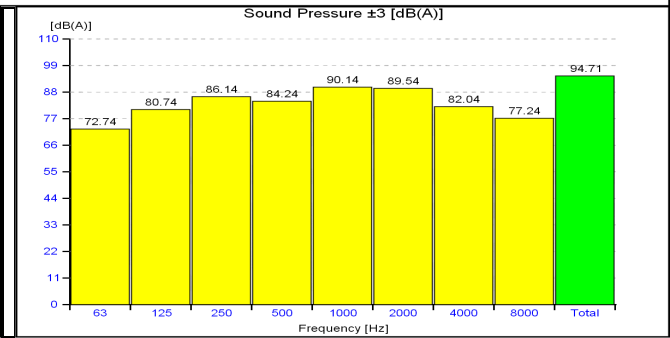
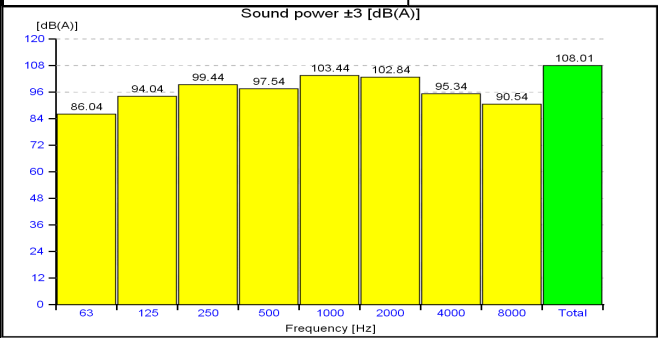
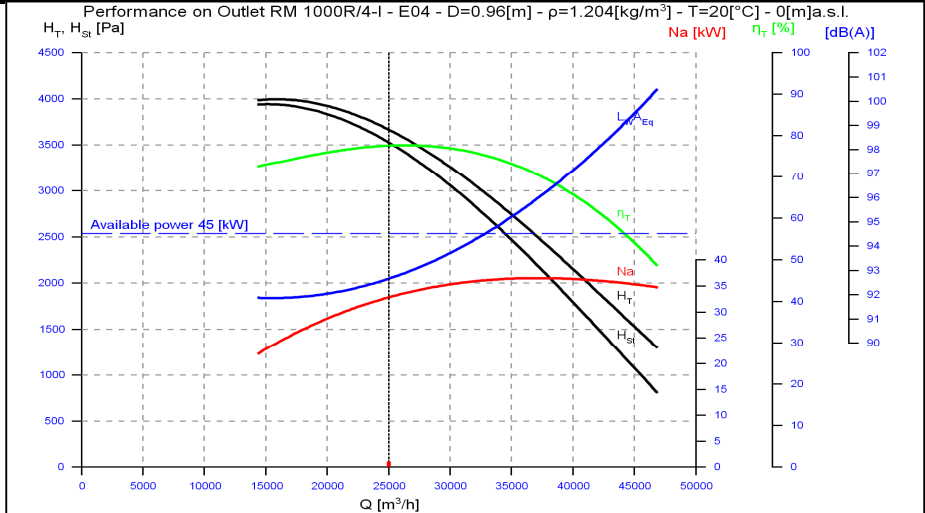
Type and characteristics of the requested machine		performance on		Outlet
Flow rate	25000 [m3/h]	Capacity (Normal)		23294 [Nm3/h]
Total pressure	3550 [Pa]	Static pressure		
Working fluid temperature	20 [°C]	Fluid specific weight		1.204 [Kg/m3]
Installation altitude	0 asl [m]	Specific weight std (20 [°C], 0 asl [m])		1.204 [Kg/m3]

Suggested model and effective characteristics				performance on		Outlet
Model	RM 1000R/4-I	Execution	E04	Installation Type	A (free inlet and outlet)	
Fluid specific weight	1.204	1.204 [Kg/m3]		Revolution fan speed		1475 [rpm]
Total pressure	3664	3664 [Pa]		Orientation		RD 0
Static pressure	3524	3524 [Pa]		Sound power LwA		108.01 [dB(A)]
Flow rate	25000	25000 [m3/h]		Sound pressure at mt.1.5 1/2 sf in open field		94.71 [dB(A)]
Capacity (Normal)	23294	23294 [Nm3/h]		Pipings	s>3mm = +3dB; 1mm<s<3mm = +4,5dB; s<1mm = +6dB	
Power dem. at shaft	32.803	32.803 [kW]		Fan efficiency	Outlet	77.56 %
Motor power demand	32.803	32.803 [kW]				

Characteristics of chosen motor				Motor efficiency IEC 60034-30			PD ² impeller	48.0	kgm ²	
Code	225M04-50/std3P	shape	B3	Efficiency	94.2	94.9	95.1	PD ² needed	47.81	kgm ²
Rated power	45.0 [kW]	n° poles	4	rpm	1478			PD ² motor	198	kgm ²

ErP 2009/125/CE Regulament (UE) N. 327/2011		Notes	
Efficiency grade	64	N	72.5
Impeller type	backward blades	Type of test	B/total
		Flow rate	26284.32 [m3/h]
		Pressure	3417 [Pa]
		Total efficiency	73.8 %

NOTE
 Rpm Limit <=60 °C: 1550 Rpm



values of the noise of fan obtained in ambient not reverberant with inlet and outlet ducts fully insulated

TECHNICAL DATA SHEET

RADIAL FAN nr. AFGG-35_20



G&G filtration CZ, s.r.o.

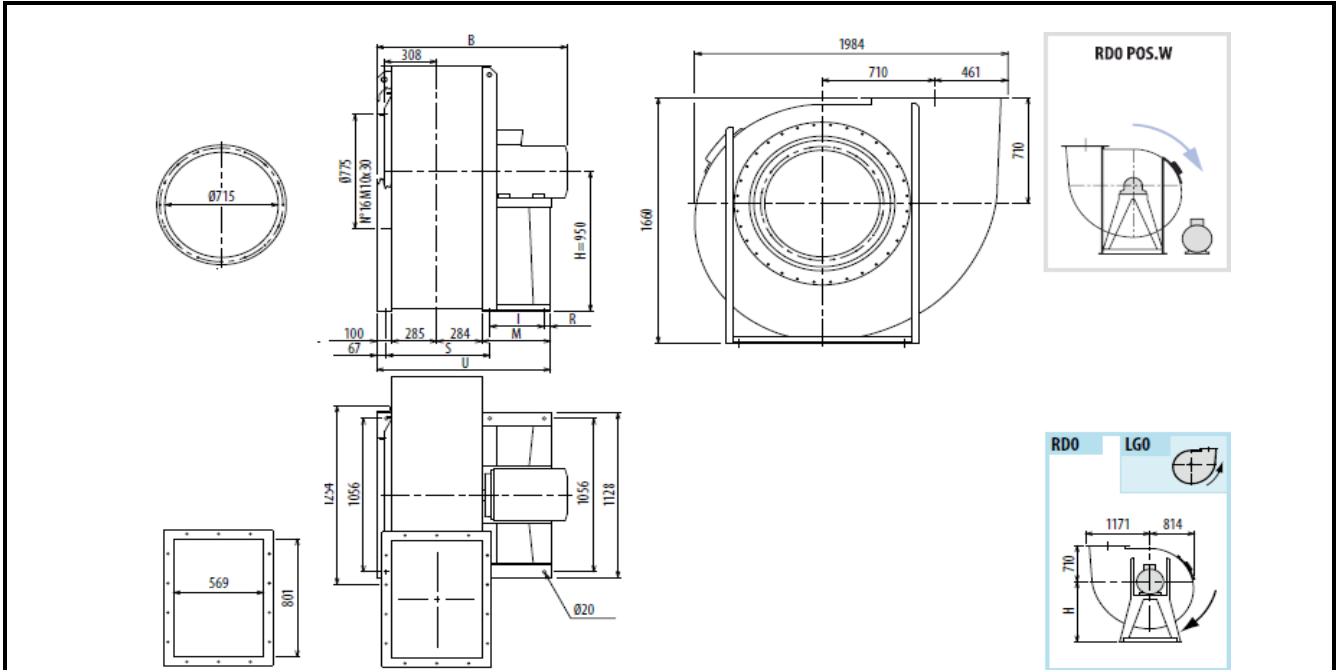
A Hrubínova 1903/9, 66451 Šlapanice, CZ

IČ 05226953 IČ DPH CZ05226953

E info@ggf.cz W www.ggf.cz

ITEM1

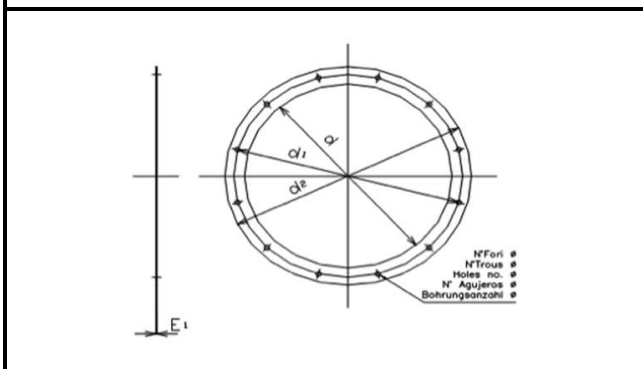
Document printed by Aeraulica - Dimensions and performances can be changed without prior notice



Indicative measures in the standard configuration. For detailed information contact your reference.

Indicative value of weight including standard motor.

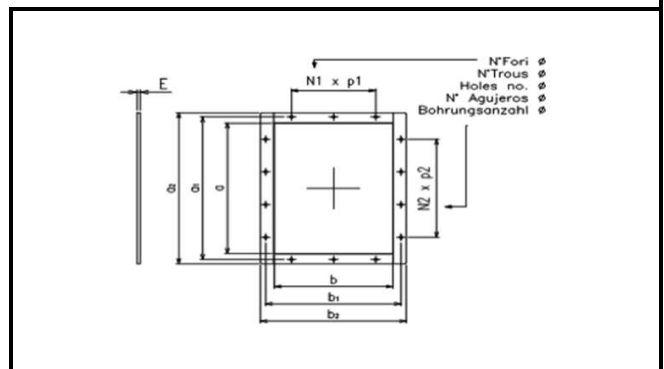
B	I	H	H1	H2	R	S	M	U	PD2	kg		
1378	440	950	710	1180	45	657	540	1209	48	963		



Cod	dxn°	d1	d2	Φ	E1
0715 A	715x16	775	815	14	5

--	--	--	--	--	--

--	--	--	--	--	--



Cod	axb	a1	b1	a2	b2
0801x0569	801x569	871	639	921	689

N1xp	N2xp	n°	Φ	E	
2x200	3x200	14	14	6	

--	--	--	--	--	--